

# Laguna Beach SMR

---

## *Site description*

<b>Name:</b>	<b>Laguna Beach State Marine Reserve</b>
<b>Incorporating:</b>	Heisler Park State Marine Reserve, Laguna Beach State Marine Conservation Area
<b>Type:</b>	State Marine Protected Area Type A: Reserve
<b>Local Area Manager:</b>	City of Laguna Beach, Department of Marine Safety <i>Marine Protection Officer</i>
<b>Partners:</b>	Laguna Ocean Foundation

## *Site Restrictions*

<b>Recreational:</b>	No Take Allowed
<b>Commercial:</b>	No Take Allowed
<b>Major Changes:</b>	No lobster, spearfishing, shore or boat hook and line

## *Site delineation*

**Boundaries:** This area is bounded by the mean high tide line and straight lines connecting the following points in the order listed:

33° 33.233' N. lat.	117° 49.200' W. long.
33° 30.800' N. lat.	117° 49.200' W. long.
33° 30.800' N. lat.	117° 45.631' W. long.

**Approximate Area:** 6.27 mi<sup>2</sup>

**Approximate Shoreline length:** 5.88 mi

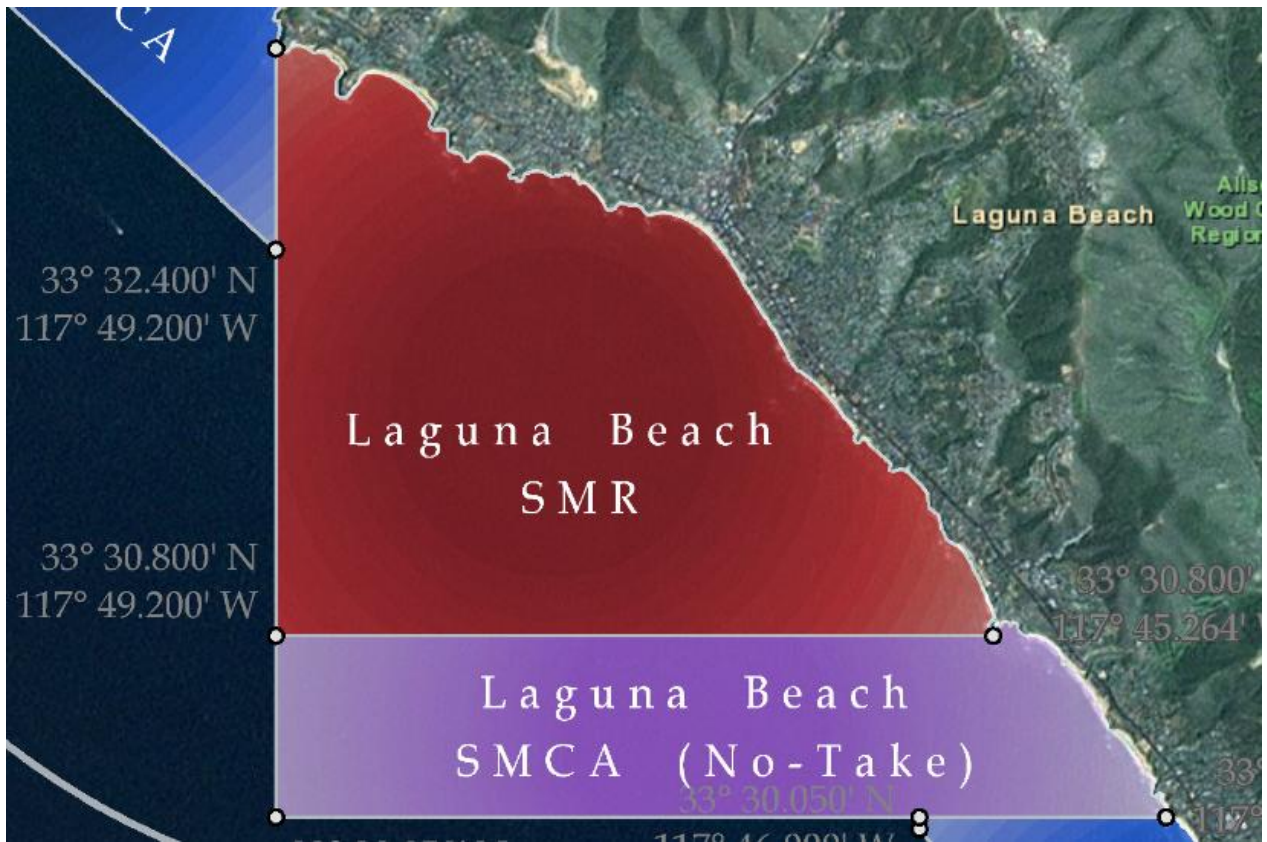
**Approximate Depth range (feet):** 0 to 1171 ft

## *Local Codes*

### **Laguna Beach Municipal Code, Parks and Beaches, Section 29**

**LBMC 18.29.030 Unlawful acts.** No person shall take, possess or disturb specimens of live or dead intertidal marine animal or plant life, or willfully injure, destroy or alter marine intertidal zone habitats.

# Laguna Beach SMR

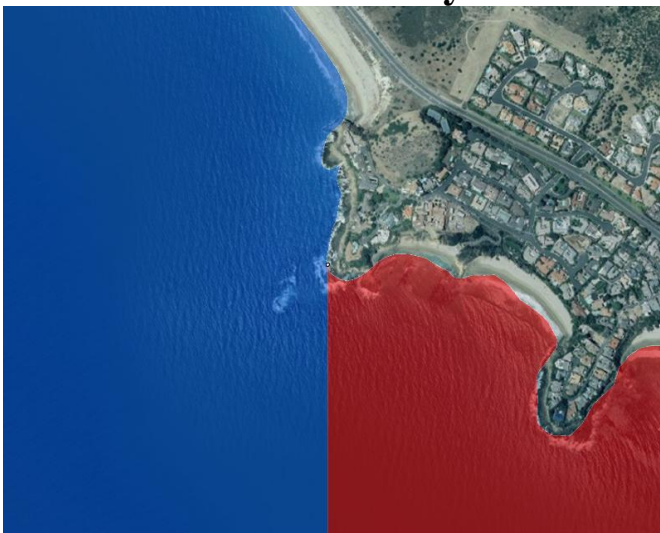


## *Boundary Access Streets/Markers:*

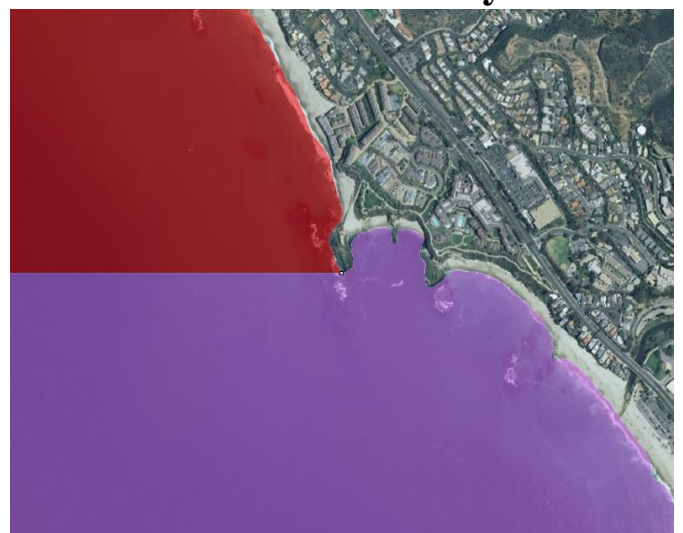
North End: Abalone Point (Cave on rocky point between El Moro and Irvine Cove)

South End: Goff Island Point

## Northern Boundary



## Southern Boundary



# Laguna Beach SMR

---

## *Northern Boundary*



Photo taken at the top of the ramp heading to Irvine Cove Beach.

Private access with manned kiosks, on right side for north bound traffic, and right side for south bound traffic.



Photo taken above ramp/road to Little Irvine Cove (north side)

Note: The Southern Boundary line off of Goff Point is not shown because there is no change in take regulations. In addition this line may change to the City/County line south of Treasure Island. It is currently in the clean-up package to be evaluated by the Fish and Game Commission.



# Laguna Beach SMR

## Main Access Points (Private)

Irvine Cove  
Emerald Bay

## Access Points (Public)

Crescent Bay  
Shaws Cove  
Boat Canyon  
Divers Cove  
Heisler Park Picnic Beach  
Heisler Park Monument Point  
Heisler Park Rockpile  
Heisler Park Bird Rock

North Main Beach  
Main Beach (Broadway)  
Laguna Avenue  
Sleepy Hollow  
Cleo Street  
St. Ann's  
Thalia St.  
Anita St.  
Oak St.  
Brooks St.  
Cress St.  
Mountain Rd.  
Bluebird  
Agate St.  
Pearl St.

Woods Cove North  
Woods Cove South  
Moss Cove  
Victoria Stairs  
Victoria Ramp  
Treasure Island Christmas Cove Ramp

(Treasure Island Goff Cove Stairs)  
(Treasure Island South Ramp/Stairs)



Crescent Bay Ramp (South)



Cleo Street - surf stretch, access at end of every street off PCH



Treasure Island north ramp down to Christmas Cove and Goff Beach. Point at bottom of the ramp is the SMR south boundary.